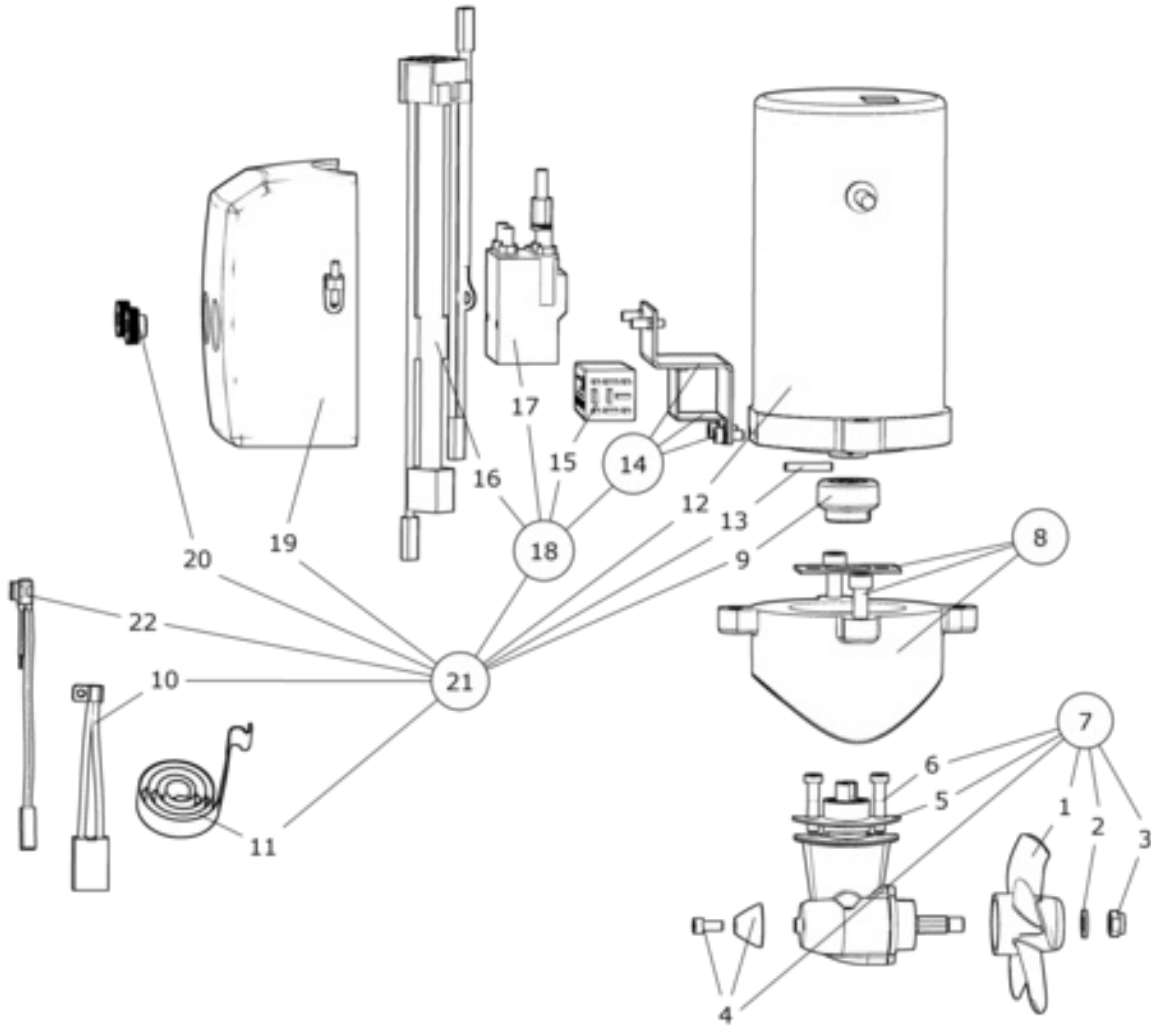


SE25/110S - SE25 Tunnel bow thruster, 12V



Spare parts (valid from 2019-02-04)



#	Description	Product
1	Propeller	SM-125960 - Thruster propeller SE25
2	Propeller washer	208125 - Washer DIN125A M8 A4 (SB)
3	Locknut	3 1250 - Lock nut
4	Anode	3 1180 A - Anode, aluminium, SE30/40/50
5	Gasket	3 1310 10 - Gasket for gearleg installation in tunnel, SE40
6	Gearleg bolt	110033 - Bolt M6 x30
7	Complete gearleg	2 0600 - Complete gearleg SE20/25
8	Complete motor bracket	SM-126302 - Complete motor bracket SE20/25
9	Complete flexible coupling	SM-128472 - Kobling m/låsepinne
10	Brushes for motor (kit)**	**
11	Brush springs for motor (kit)**	**
12	Electric motor	N/A
13	Key for electric motor shaft	112032 - Pinne 4 x 28
14	Solenoid bracket kit	2 0135 - Solenoid bracket kit SE30
15	Electronic control box	6 1232 I - IPC relay 12/24V
16	Internal wiring loom	6 1200 B - Internal wiring harness
17	Solenoid	41571123 - Solenoid replacement
18	Complete solenoid kit	2 0131 12 - Complete solenoid kit 12v SE30
19	Solenoid Cover	3 2024 - Solenoid cover for SE30
20	Nut for solenoid cover	6 8810 - Nut for solenoid cover
21	Complete electric motor assembly	2 0105 12 - Complete electric motor for thruster SE25-12V
22	Temp switch*	*

The installer alone has responsibility for the installation of the spare parts. Side-Power only warranty the spare parts supplied only.

The information given in the document was correct at the time it was published. However, Sleipner Motor AS can not accept liability for any inaccuracies or omissions it may contain. Continuous product improvement may change the product specifications without notice. Therefore, Sleipner Motor AS can not accept liability for any possible differences between product and document.